

Loop 1 Shed Session



Loop 1

D Δ 7 C \sharp \emptyset 7 F \sharp 7(b9) B-7

Bars 1 - 3

6 Passes of Loop 1

D Δ 7 C \sharp \emptyset 7 F \sharp 7(b9) B-7

3

D Δ 7 C \sharp \emptyset 7 F \sharp 7(b9) B-7

3

D Δ 7 C \sharp \emptyset 7 F \sharp 7(b9) B-7

3 3

D Δ 7 C \sharp \emptyset 7 F \sharp 7(b9) B-7

3

D Δ 7 C \sharp \emptyset 7 F \sharp 7(b9) B-7

3

D Δ 7 C \sharp \emptyset 7 F \sharp 7(b9) B-7

3 3

Loop 1 Shed Session



Loop 1

G Δ 7 F \sharp o7 B7(b9) E-7

Bars 1 - 3

The musical staff for Loop 1 consists of three bars. Each bar contains a whole note chord: G Δ 7, F \sharp o7, B7(b9), and E-7. The staff is marked with a repeat sign at the beginning and end.

6 Passes of Loop 1

G Δ 7 F \sharp o7 B7(b9) E-7

G Δ 7 F \sharp o7 B7(b9) E-7

G Δ 7 F \sharp o7 B7(b9) E-7

G Δ 7 F \sharp o7 B7(b9) E-7

G Δ 7 F \sharp o7 B7(b9) E-7

G Δ 7 F \sharp o7 B7(b9) E-7

The six passes of Loop 1 are shown as musical staves. Each staff contains a melodic line for the corresponding chord in the loop. The chords are G Δ 7, F \sharp o7, B7(b9), and E-7. The melodic lines are written in treble clef and include various rhythmic patterns, including eighth notes, quarter notes, and triplets. The first pass is a simple quarter-note melody. The subsequent passes introduce more complex rhythms and melodic variations, including triplets and slurs.

Bb Brass Instruments

Loop 1 Shed Session



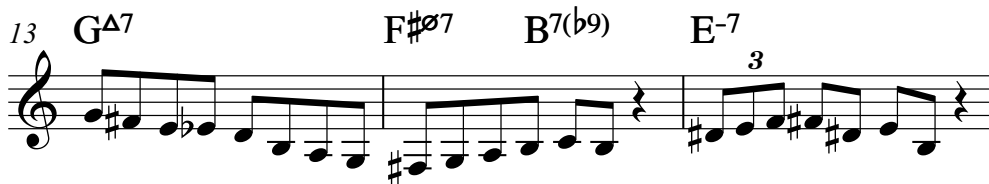
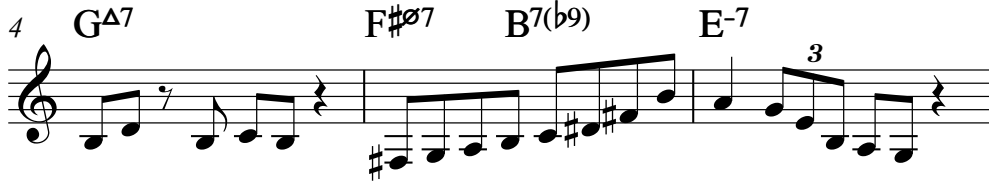
Loop 1

G Δ 7 F \sharp \emptyset 7 B7(b9) E-7



Bars 1 - 3

6 Passes of Loop 1



C Instruments

Loop 1 Shed Session



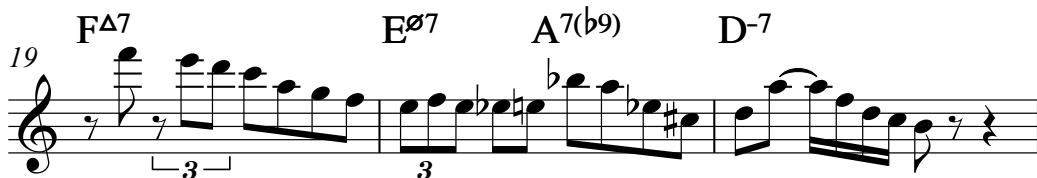
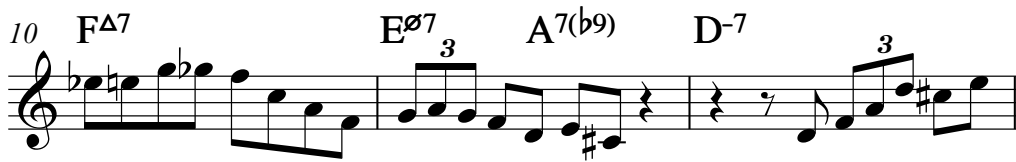
Loop 1

F Δ 7 E \emptyset 7 A7(b9) D-7



Bars 1 - 3

6 Passes of Loop 1

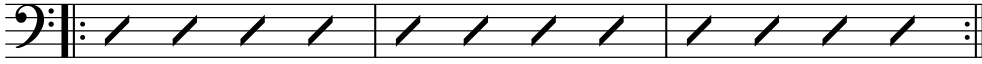


Bass Celf Instruments (High)

Loop 1 Shed Session

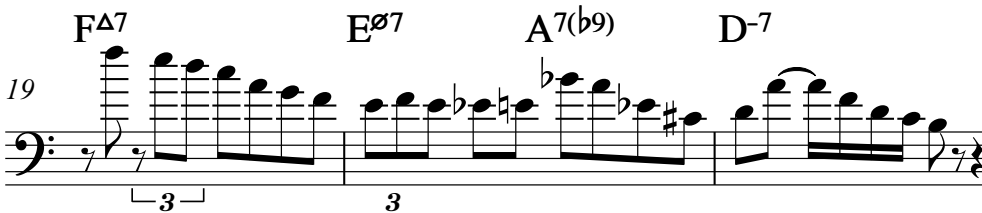
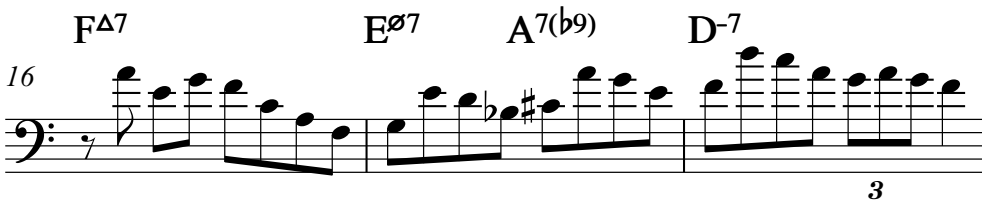
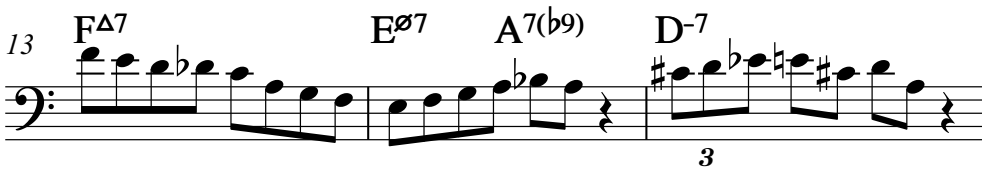
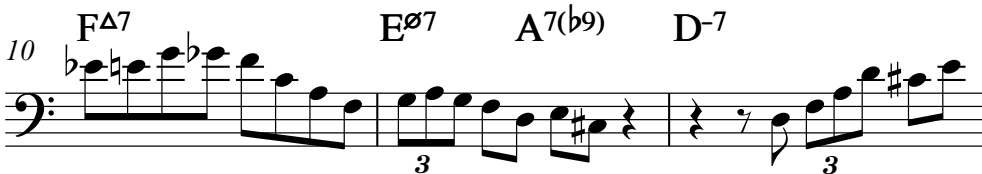
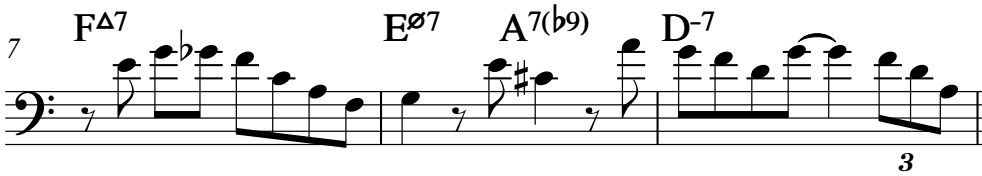
Loop 1

F Δ 7 E \emptyset 7 A7(b9) D-7



Bars 1 - 3

6 Passes of Loop 1



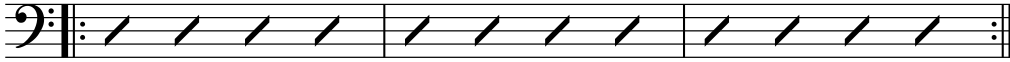
Bass Clef Instruments (Low)

Loop 1 Shed Session



Loop 1

F Δ 7 E \emptyset 7 A7(b9) D-7



Bars 1 - 3

6 Passes of Loop 1

