

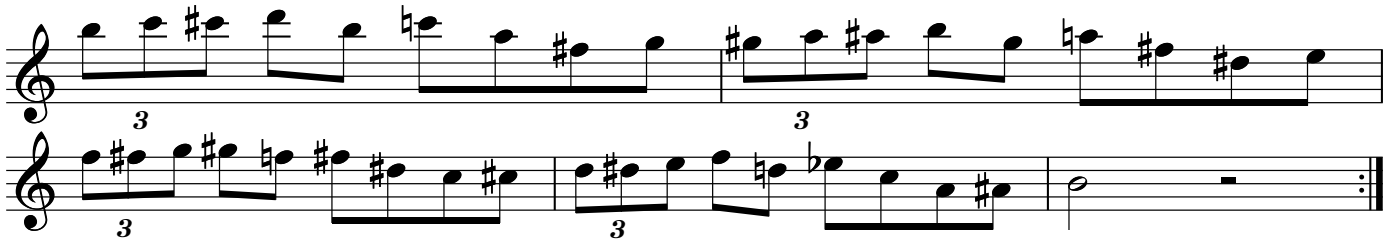
Cool Diminished Enclosure in all 12 :)

Ascending

B7(b9) OR C°7



Descending

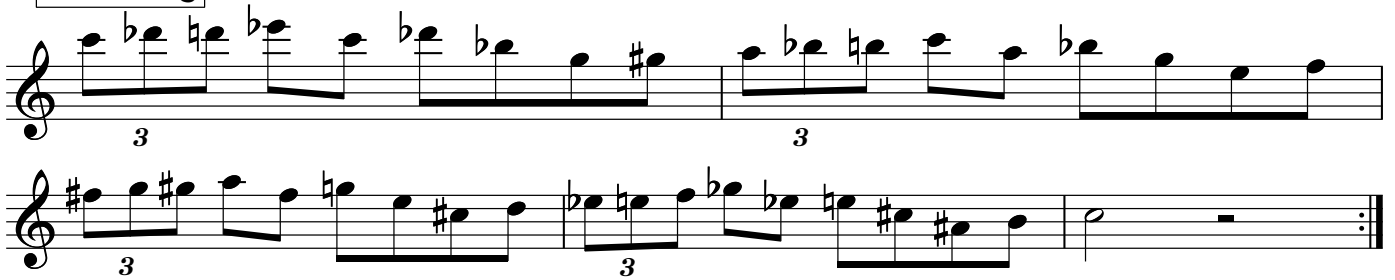


Ascending

C7(b9) OR Db°7



Descending

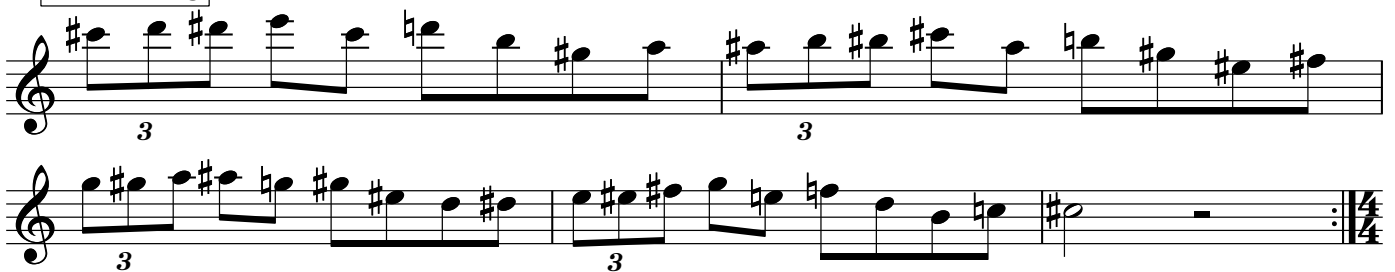


Ascending

C#7(b9) OR D°7



Descending



Ascending

D7(b9) OR Eb07

Descending

Ascending

Eb7(b9) E07
OR

Descending

Ascending

E7(b9) OR F07

Descending

Ascending

F7(b9) OR Gb^o7

Ascending scale for F7(b9) OR Gb^o7 in treble clef. The scale consists of the following notes: F, G, A, Bb, C, D, Eb, F. The notes are written on a five-line staff with a treble clef and a repeat sign at the beginning and end.

Descending

Descending scale for F7(b9) OR Gb^o7 in treble clef. The scale consists of the following notes: F, Eb, D, C, Bb, A, G, F. The notes are written on a five-line staff with a treble clef and a repeat sign at the beginning and end. There are two triplet markings (3) under the first and fifth notes.

Descending scale for F7(b9) OR Gb^o7 in treble clef. The scale consists of the following notes: F, Eb, D, C, Bb, A, G, F. The notes are written on a five-line staff with a treble clef and a repeat sign at the beginning and end. There is a triplet marking (3) under the first three notes.

Ascending

F#7(b9) OR G^o7

Ascending scale for F#7(b9) OR G^o7 in treble clef. The scale consists of the following notes: F#, G, A, B, C, D, E, F#. The notes are written on a five-line staff with a treble clef and a repeat sign at the beginning and end.

Descending

Descending scale for F#7(b9) OR G^o7 in treble clef. The scale consists of the following notes: F#, E, D, C, B, A, G, F#. The notes are written on a five-line staff with a treble clef and a repeat sign at the beginning and end. There are two triplet markings (3) under the first and fifth notes.

Descending scale for F#7(b9) OR G^o7 in treble clef. The scale consists of the following notes: F#, E, D, C, B, A, G, F#. The notes are written on a five-line staff with a treble clef and a repeat sign at the beginning and end. There is a triplet marking (3) under the first three notes.

Ascending

G7(b9) OR Ab^o7

Ascending scale for G7(b9) OR Ab^o7 in treble clef. The scale consists of the following notes: G, Ab, Bb, C, D, Eb, F, G. The notes are written on a five-line staff with a treble clef and a repeat sign at the beginning and end.

Descending

Descending scale for G7(b9) OR Ab^o7 in treble clef. The scale consists of the following notes: G, F, Eb, D, C, Bb, Ab, G. The notes are written on a five-line staff with a treble clef and a repeat sign at the beginning and end. There are two triplet markings (3) under the first and fifth notes.

Descending scale for G7(b9) OR Ab^o7 in treble clef. The scale consists of the following notes: G, F, Eb, D, C, Bb, Ab, G. The notes are written on a five-line staff with a treble clef and a repeat sign at the beginning and end. There is a triplet marking (3) under the first three notes.

AscendingA \flat 7(b9) OR A $^{\circ}$ 7**Descending****Ascending**A7(b9) OR B \flat 7**Descending****Ascending**B \flat 7(b9) OR B $^{\circ}$ 7**Descending**